

## FECHAD. SOBREPOSTAS SYMO

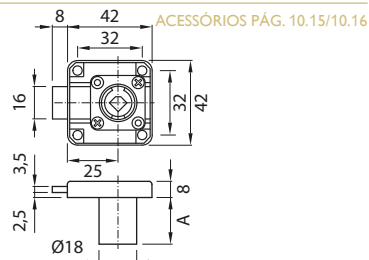
### FECHADURA SYMO LINGUETA CURTA 25mm

ZINCO

HAFELE



Código		A	Acabamento
ESQ	DRT		
A06988	A06987	25	NIQUELADO
A06986		32	NIQUELADO



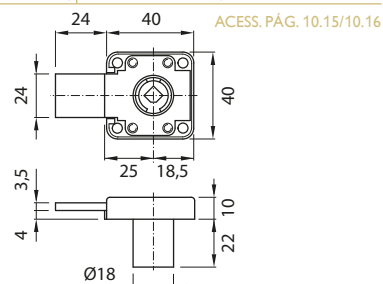
### FECHADURA SYMO LINGUETA COMPRIDA 25mm

ZINCO

HAFELE



Código		Acabamento
ESQ	DRT	NIQUELADO



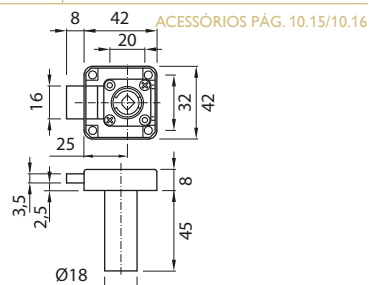
### FECHADURA SYMO 25mm CANHÃO 45mm

ZINCO

HAFELE



Código		Acabamento
ESQ	DRT	NIQUELADO
A06978	A06977	NIQUELADO



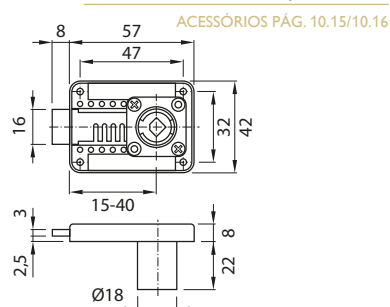
### FECHADURA SYMO ENTRADA AJUSTÁVEL 15-40mm

ZINCO

HAFELE



A07000 NIQUELADO



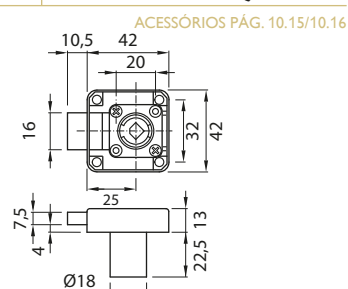
### FECHADURA SYMO C/TRINCO 25mm

ZINCO

HAFELE



Código		Acabamento
ESQ	DRT	NIQUELADO
A07002	A07001	NIQUELADO



**FECHADURA SYMO 232.30.620 C/ GARRAS**

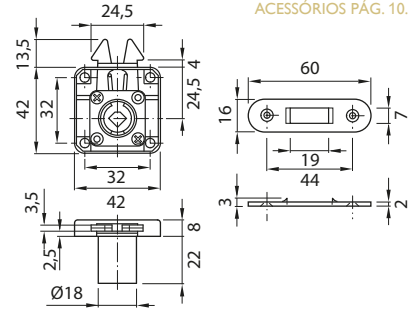
**HAFELE**



ZINCO	Código	Acabamento
-------	--------	------------

**A06979** NIQUELADO

ACESSÓRIOS PÁG. 10.15/10.16



**FECHADURA SYMO PUXADOR P/VIDRO**

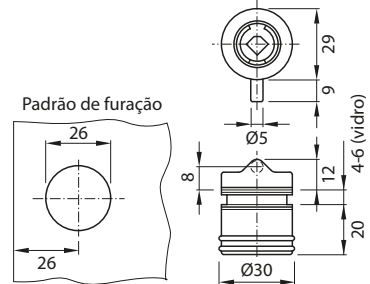
**HAFELE**



ZINCO	Código	Acabamento
-------	--------	------------

**A06999** NIQUELADO

ACESSÓRIOS PÁG. 10.15/10.16



**FECHADURA SYMO PUSH 180° 234.67.6\_0**

**HAFELE**

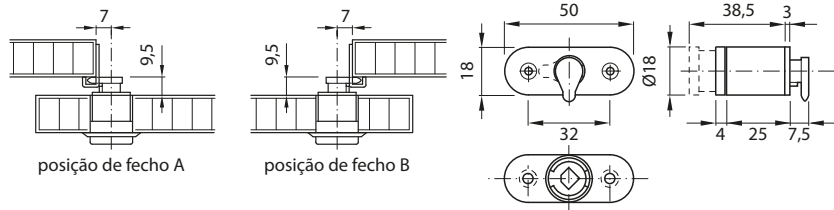


ZINCO	Código	Posição fecho	Acabamento
-------	--------	---------------	------------

**A06982** A NIQUELADO

**A06983** B NIQUELADO

ACESSÓRIOS PÁG. 10.15/10.16



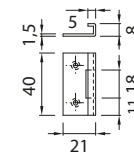
**CHAPA TESTA 239.01.910**

**HAFELE**



Código

**A02977**



**FECHADURA SYMO PUSH 180° 234.65.600**

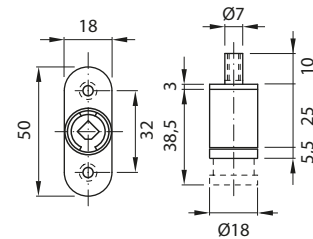
**HAFELE**



ZINCO	Código	Acabamento
-------	--------	------------

**A06998** NIQUELADO

ACESSÓRIOS PÁG. 10.15/10.16



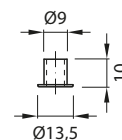
**CHAPA TESTA P/ FECHAD SYMO PUSH**

**HAFELE**



Código

**A03017**



## FECHAD. GAVETA SYMO

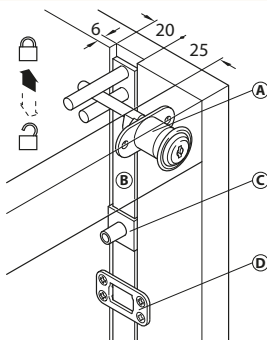
**FECHADURA SYMO P/ GAVETA 180° x 17 SIMPLES 234.98.660**

ZINCO

Código

Acabamento

**HAFELE**

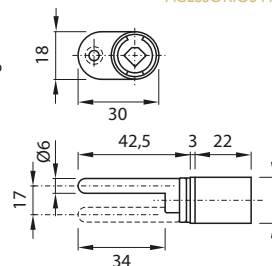


- A) Fechadura
- B) Barra
- C) Pino de arrasto
- D) Guia de barra

**A06997**

NIQUELADO

ENCOMENDAR BARRA, PINO E GUIA SEPARADAMENTE  
ACESSÓRIOS PÁG. 10.15/10.16



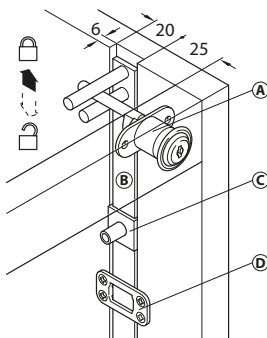
**FECHADURA SYMO P/ GAVETA 180° x 17 DUPLA 234.98.610**

ZINCO

Código

Acabamento

**HAFELE**

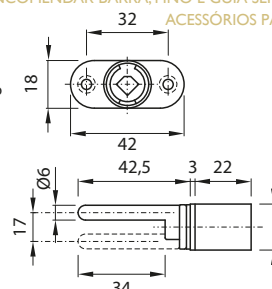


- A) Fechadura
- B) Barra
- C) Pino de arrasto
- D) Guia de barra

**A06996**

NIQUELADO

ENCOMENDAR BARRA, PINO E GUIA SEPARADAMENTE  
ACESSÓRIOS PÁG. 10.15/10.16

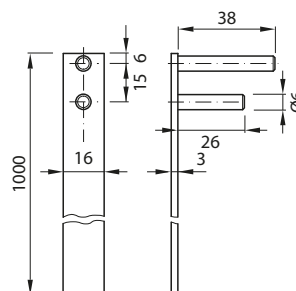


**BARRA P/ FECHAD. SYMO GAVETA 1000mm 237.10.006**

ALUMÍNIO

Código

**HAFELE**



**A01301**

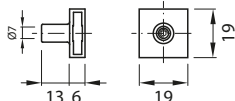
**PINO P/ FECHAD. SYMO GAVETA 13mm**

**HAFELE**

ZINCO

Código

**A11355**



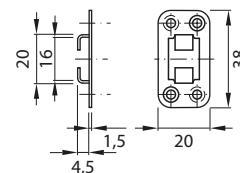
**GUIA P/ BARRA FECHAD. SYMO GAVETA**

**HAFELE**

AÇO

Código

**A08415**



**FECHO SYMO P/ FECHADURA GAVETA**

AÇO

Código

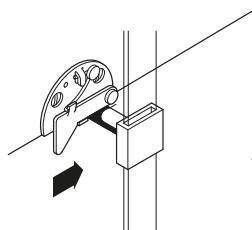
Acabamento

**HAFELE**

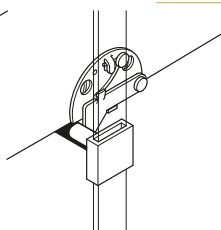
ESQ  
**A07780**

DIR  
**A07779**

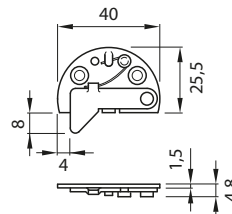
NIQUELADO



A gaveta pode ser montada mesmo que o espigão de bloqueio esteja na posição fechada...



... assim está bloqueada.

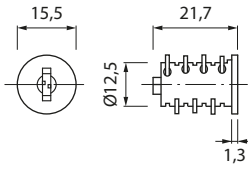


## ACESSÓRIOS FECHAD. SYMO

### NÚCLEO SYMO

ZINCO/LAT.

**HAFELE**



Código	Chaves	Combinação	Acabamento
A09777	≠	-	NIQUELADO
A09778	≠	SH 0601 - 0650 MK3	NIQUELADO
A09779	≠	SH 0651 - 0700 MK3	NIQUELADO
A09780	≠	SH 0701 - 0750 MK3	NIQUELADO
A09781	≠	SH 0751 - 0800 MK3	NIQUELADO
A09782	≠	SH 0801 - 0850 MK3	NIQUELADO
A09784	=	SH 001 MK1	NIQUELADO
A09785	=	SH 002 MK1	NIQUELADO
A09786	=	SH 003 MK1	NIQUELADO

### CHAVE SYMO MESTRA CHAVES ≠

Código

Combinação

A03135

MK3



### CHAVE SYMO MESTRA CHAVES =

Código

Combinação

A03134

MK1



### CHAVE SYMO DESMONTAGEM

Código

Combinação

A03132

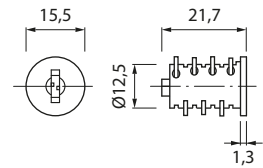
MK1, MK2 e MK3



### NÚCLEO SYMO CHAVE ARTICULADA

ZINCO/LAT.

**HAFELE**



Código	Chaves	Combinação	Acabamento
A17095	≠	SH 0701 - 0750 MK3	NIQUELADO
	=	SH 001 MK1	NIQUELADO