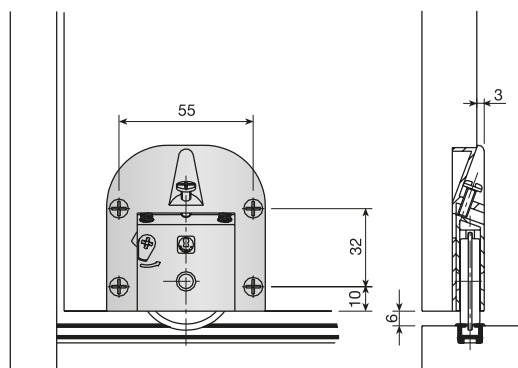
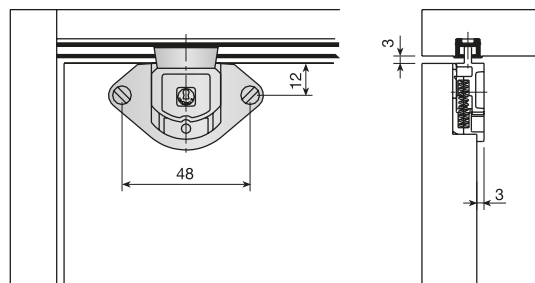
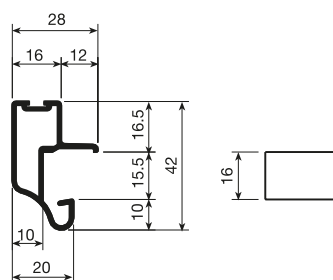


## JUNIOR-3E, EMBEDDED : Technical data

This system is designed for use in construction, for ceilings and floors and wall to wall. It can also be used in cupboards and wardrobes, depending on the design. Guides are placed on the upper portion of the door which serve to guide it along the upper track. The lower part has a highly accurate rolling system that can be adjusted up to 9 mm, which helps to compensate for uneven floor surfaces and false brackets.



Pulling profile for 16mm panel.



Fittings plan

