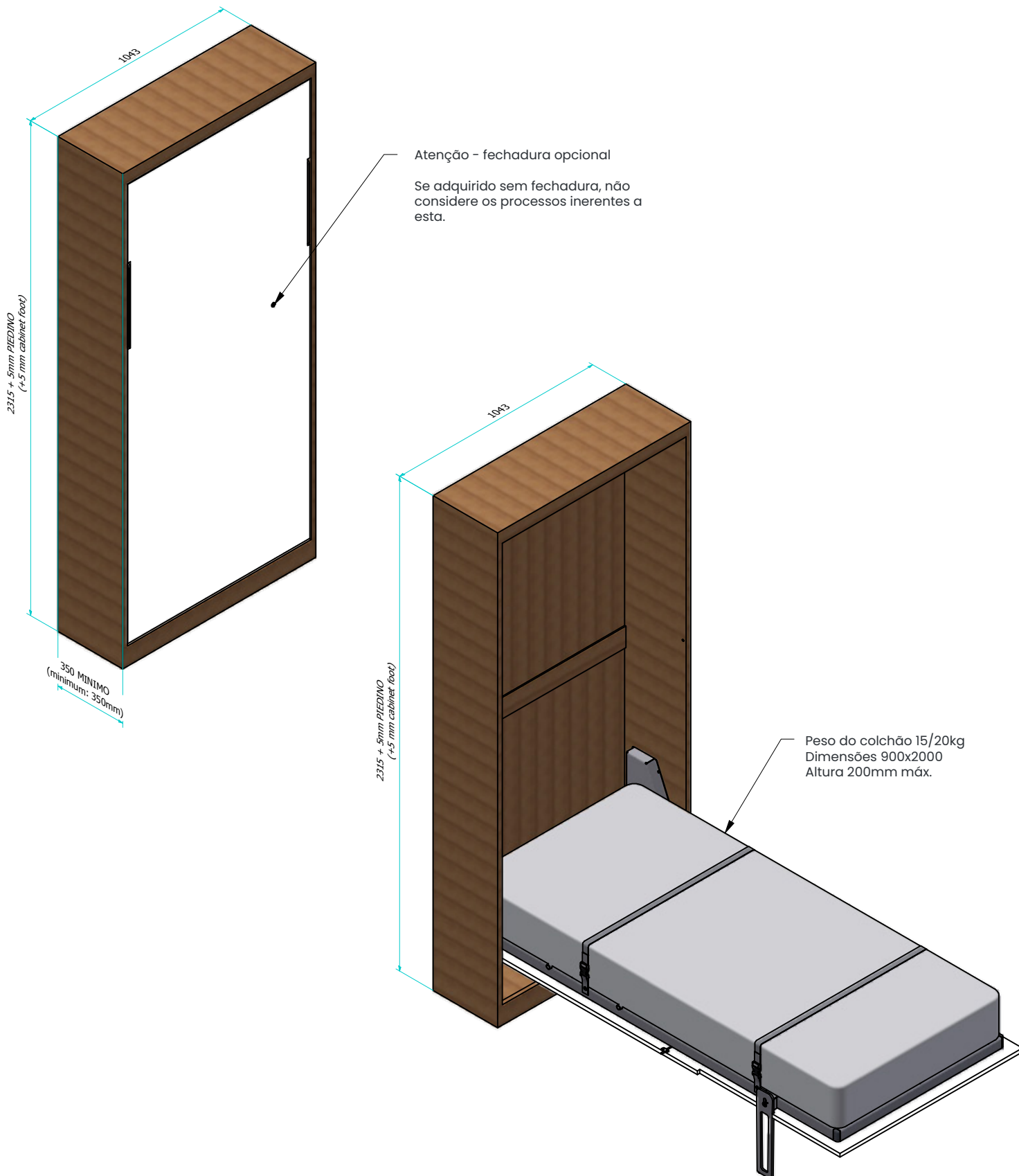


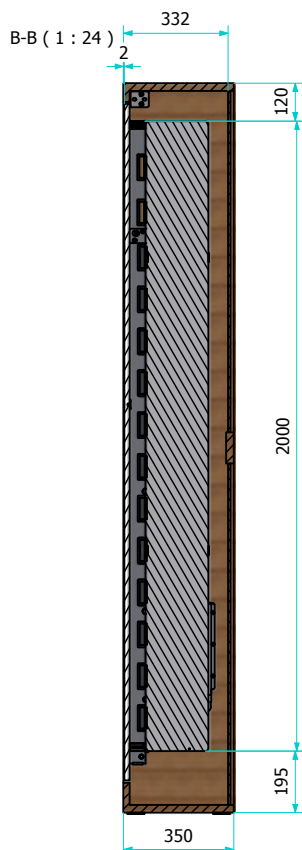
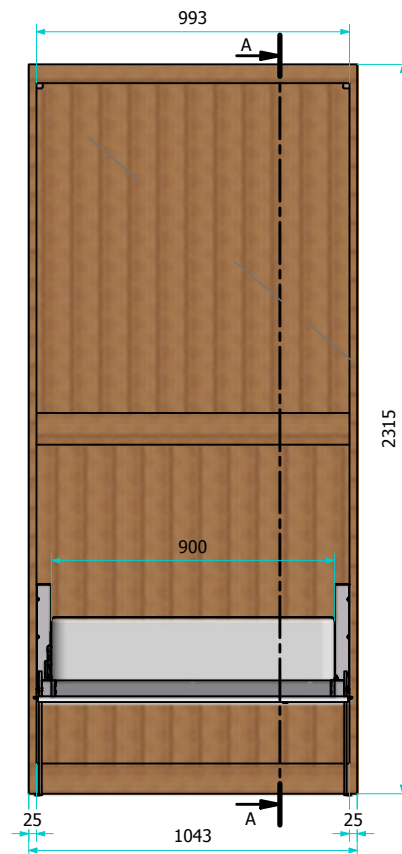
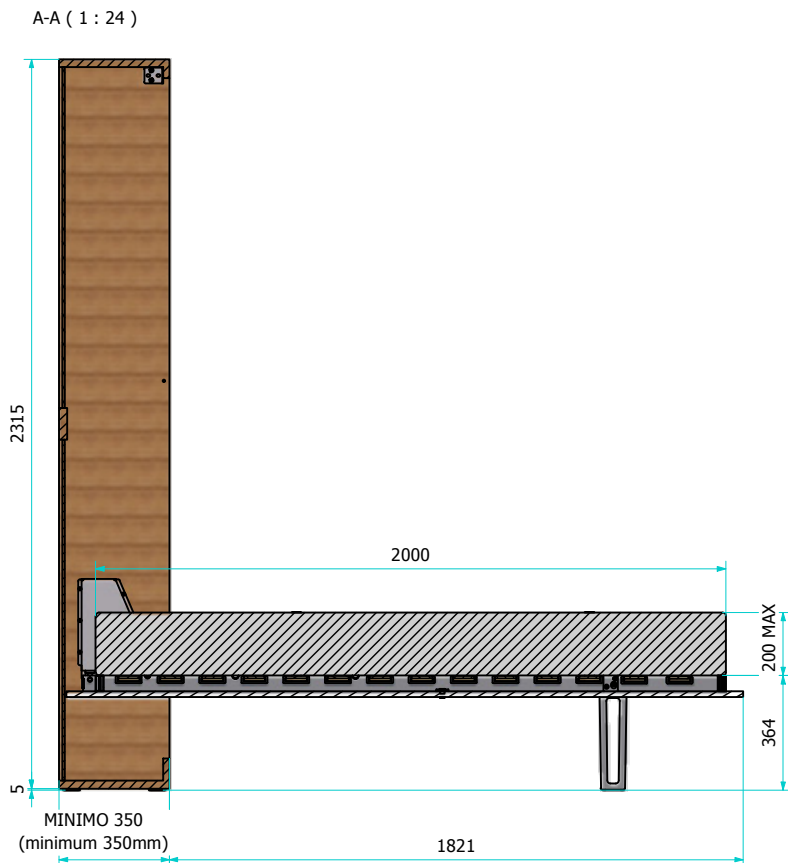
CAMA SWING 900 X 2000

BED SWING 900 X 2000



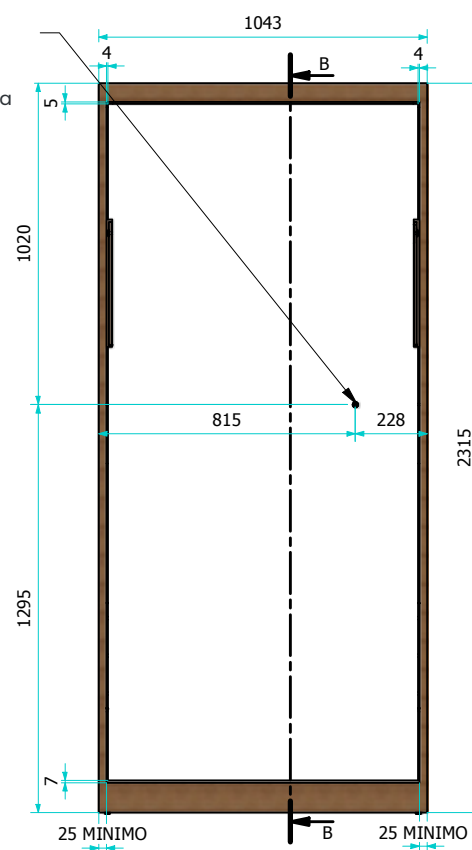
CAMA SWING 900 X 2000

BED SWING 900 X 2000



Atenção - fechadura opcional

Se adquirido sem fechadura, não considere os processos inerentes a esta.

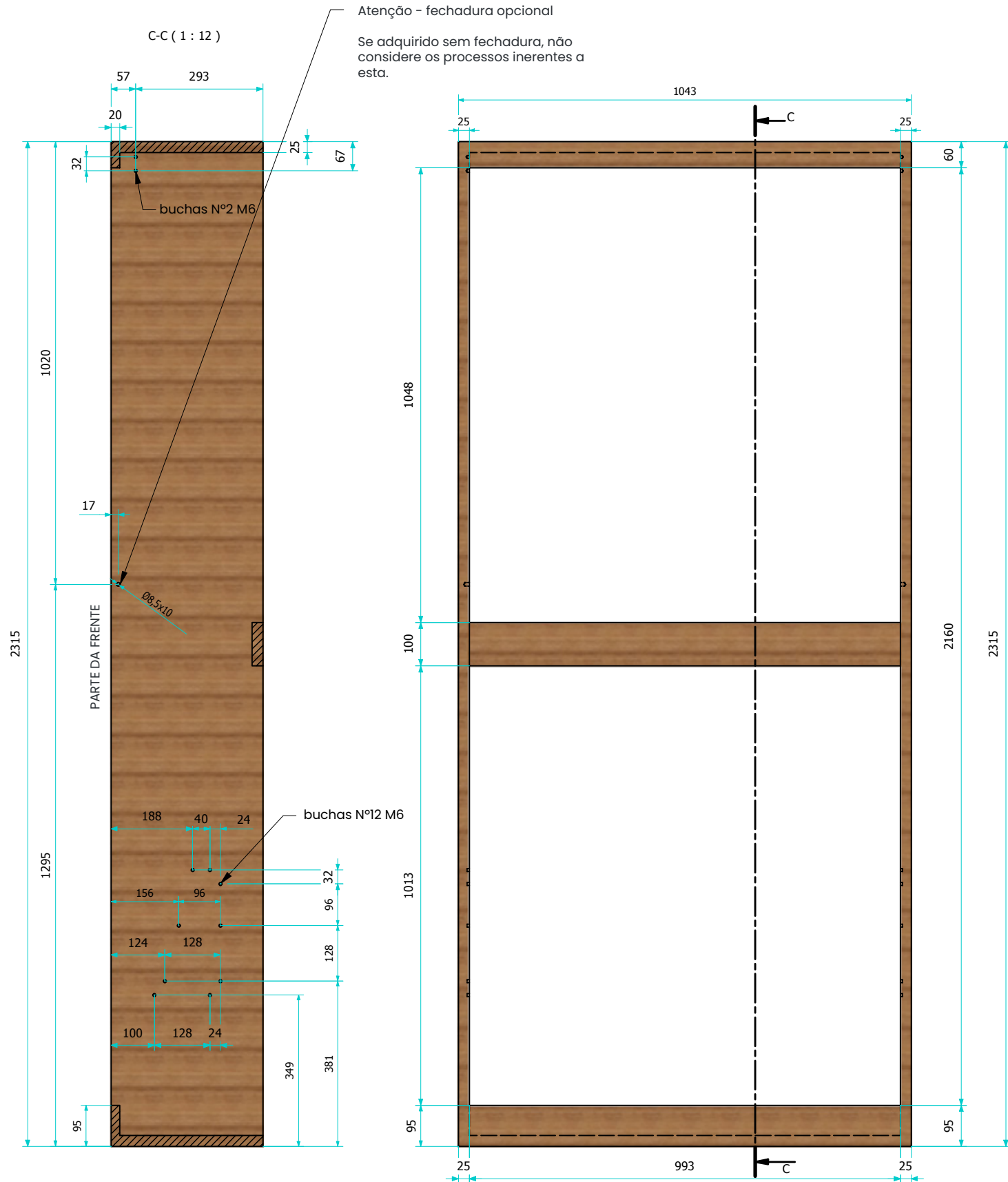


CAMA SWING 900 X 2000

BED SWING 900 X 2000



MÓVEL

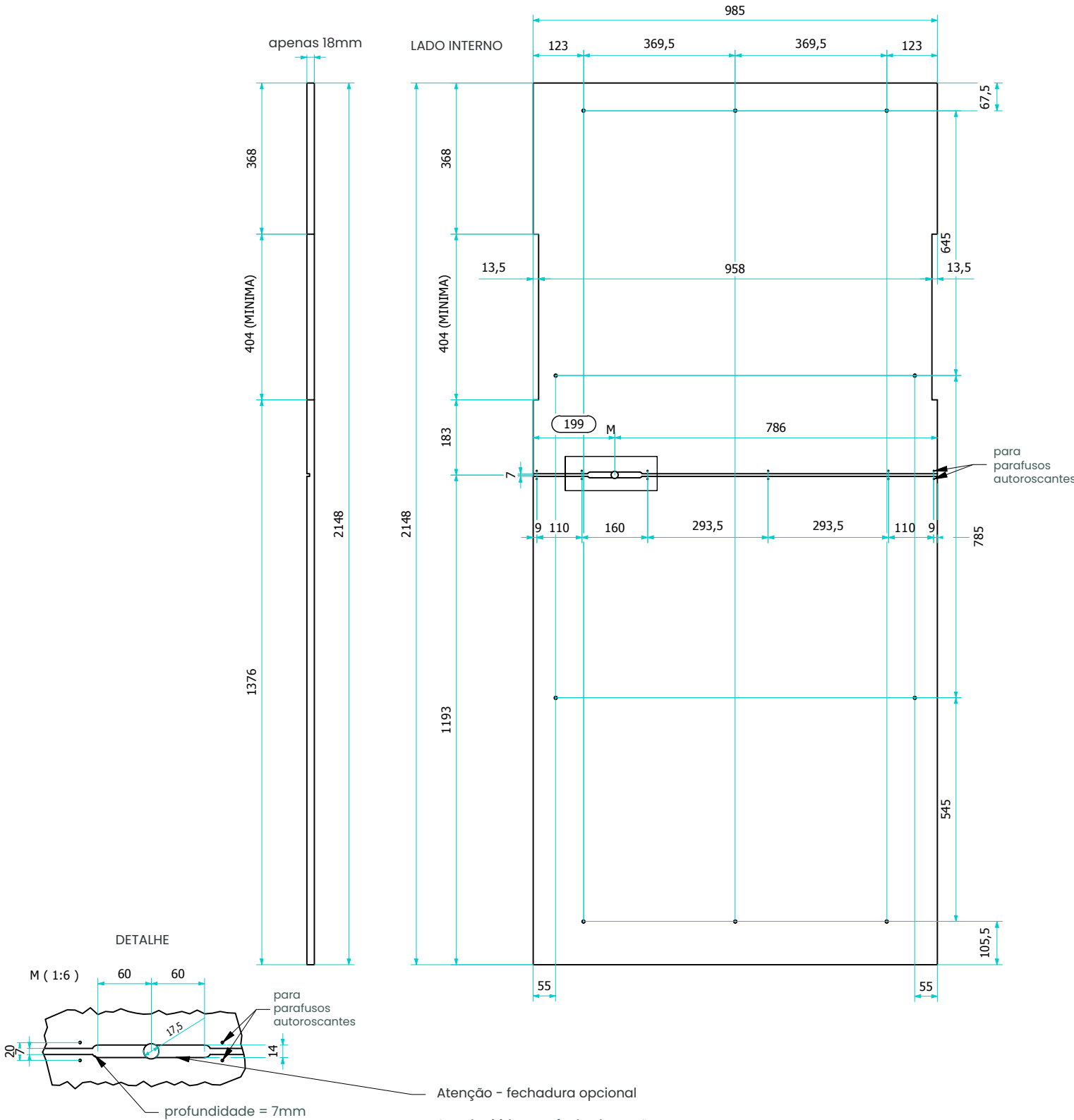


CAMA SWING 900 X 2000

BED SWING 900 X 2000



PONTOS DE FIXAÇÃO DO PAINEL FRONTAL
PESO DO PAINEL 25,5kg +/- 4%



Verificar com a fechadura e haste
 Inserir buchas M6 em cada furo

CAMA SWING 900 X 2000

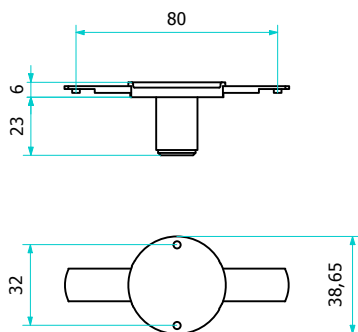
BED SWING 900 X 2000



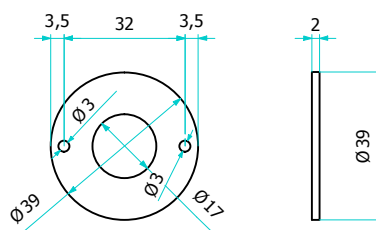
Atenção - fechadura opcional

Se adquirido sem fechadura, não considere os processos inerentes a esta.

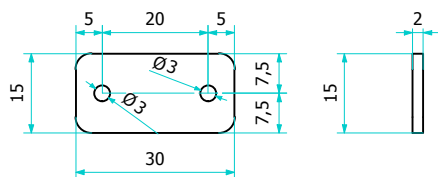
FECHO (IADSR040)



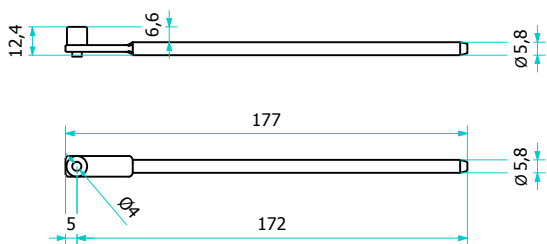
ESPAÇADOR DA FECHADURA (2ADSP039017002)



Nº 7 PLACA DE FIXAÇÃO (2ADSP030015002)



HASTE CURTA (2ADSR042)



HASTE LONGA 1464mm A SER REDUZIDA À MEDIDA 764mm PELO CLIENTE (2ADSR041)

