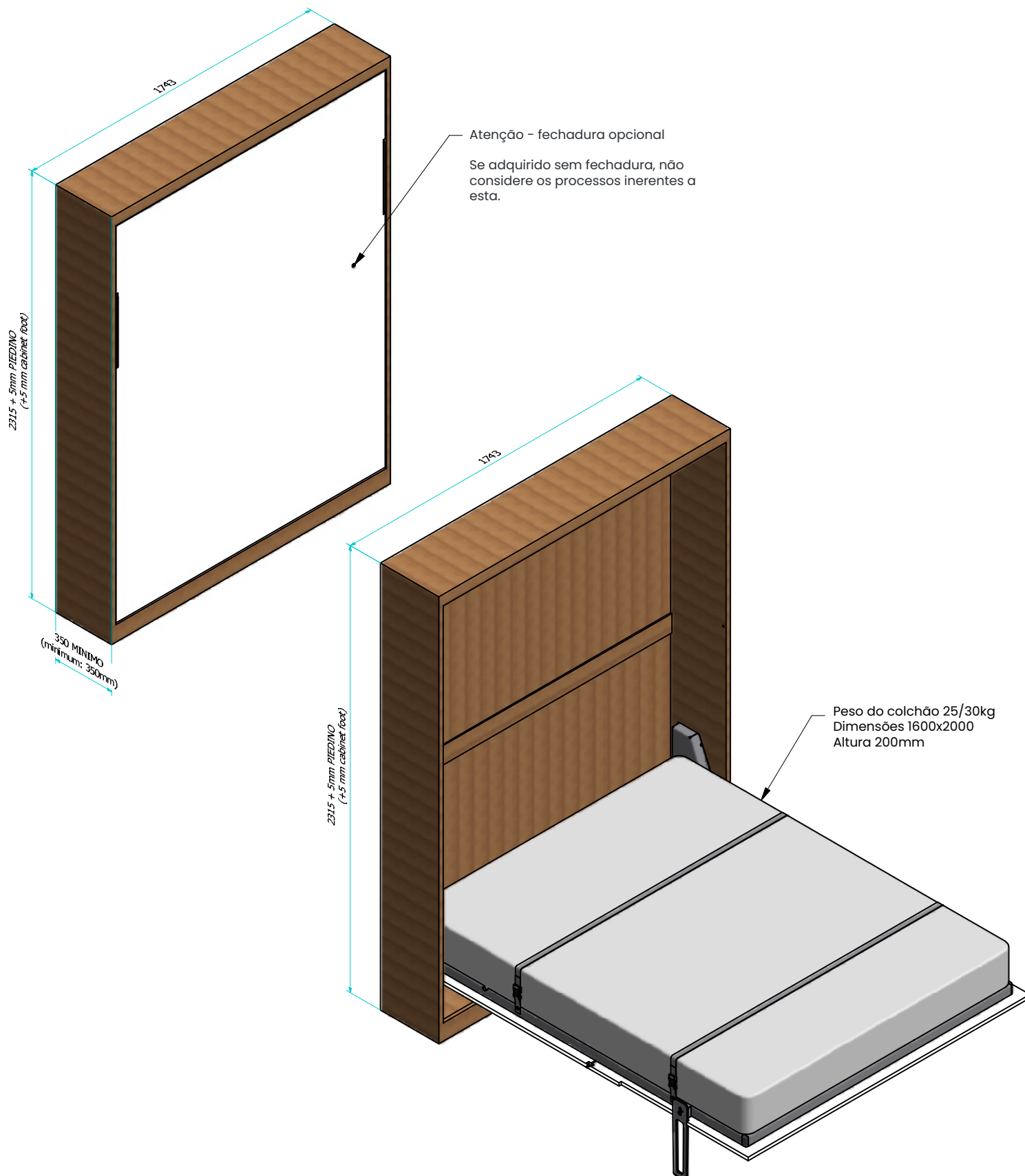


CAMA SWING 1600 X 2000

BED SWING 1600 X 2000

ADEGAL

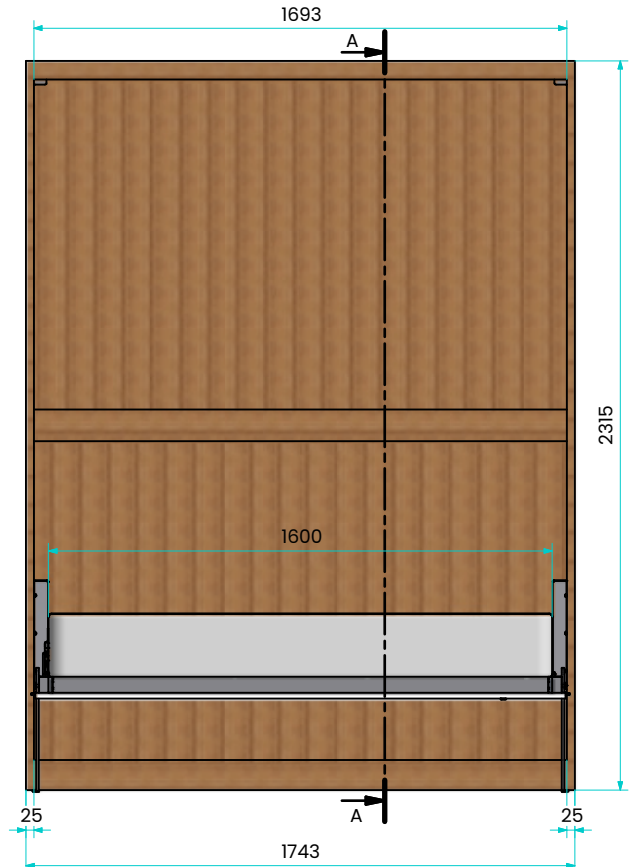
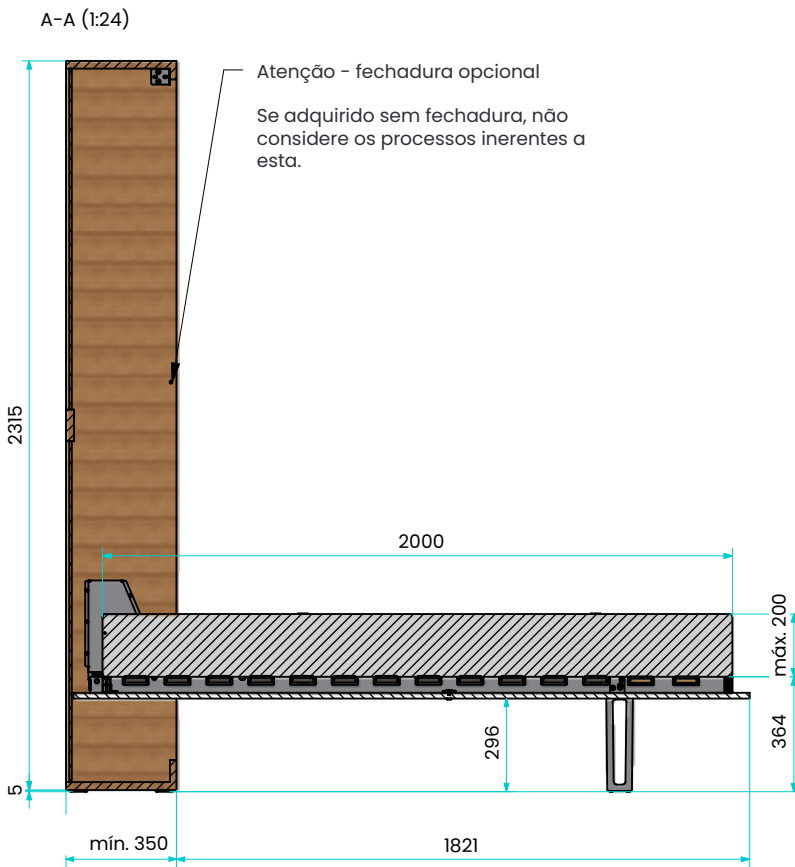


CAMA SWING 1600 X 2000

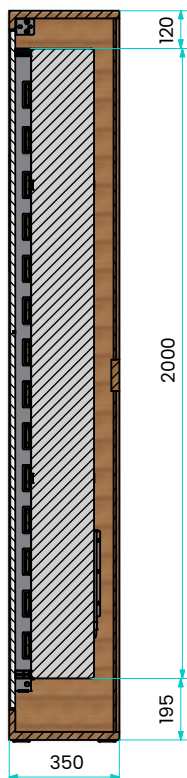
BED SWING 1600 X 2000



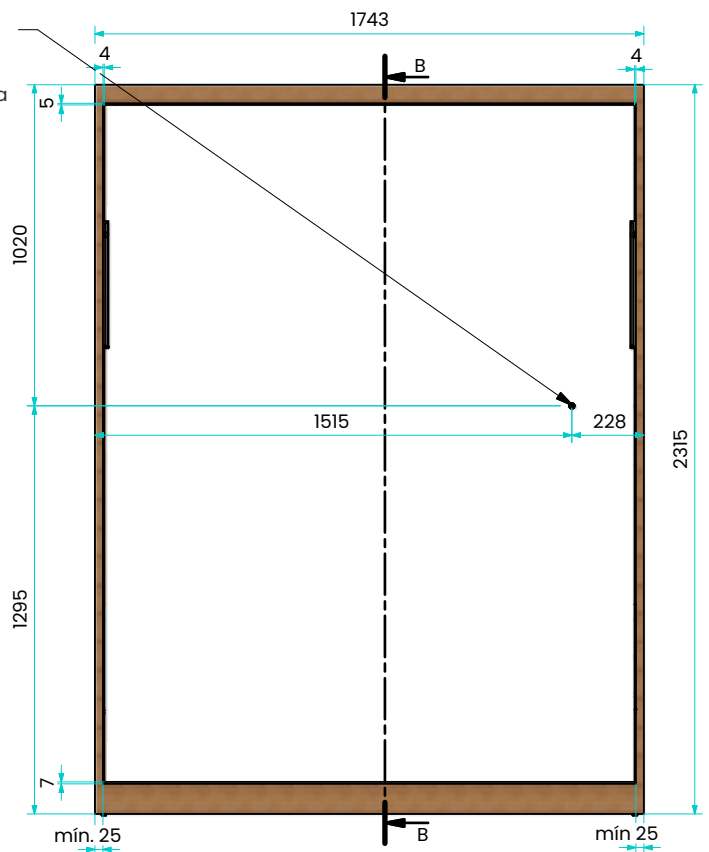
A-A (1:24)



B-B (1:24)



Atenção - fechadura opcional
Se adquirido sem fechadura, não considere os processos inerentes a esta.

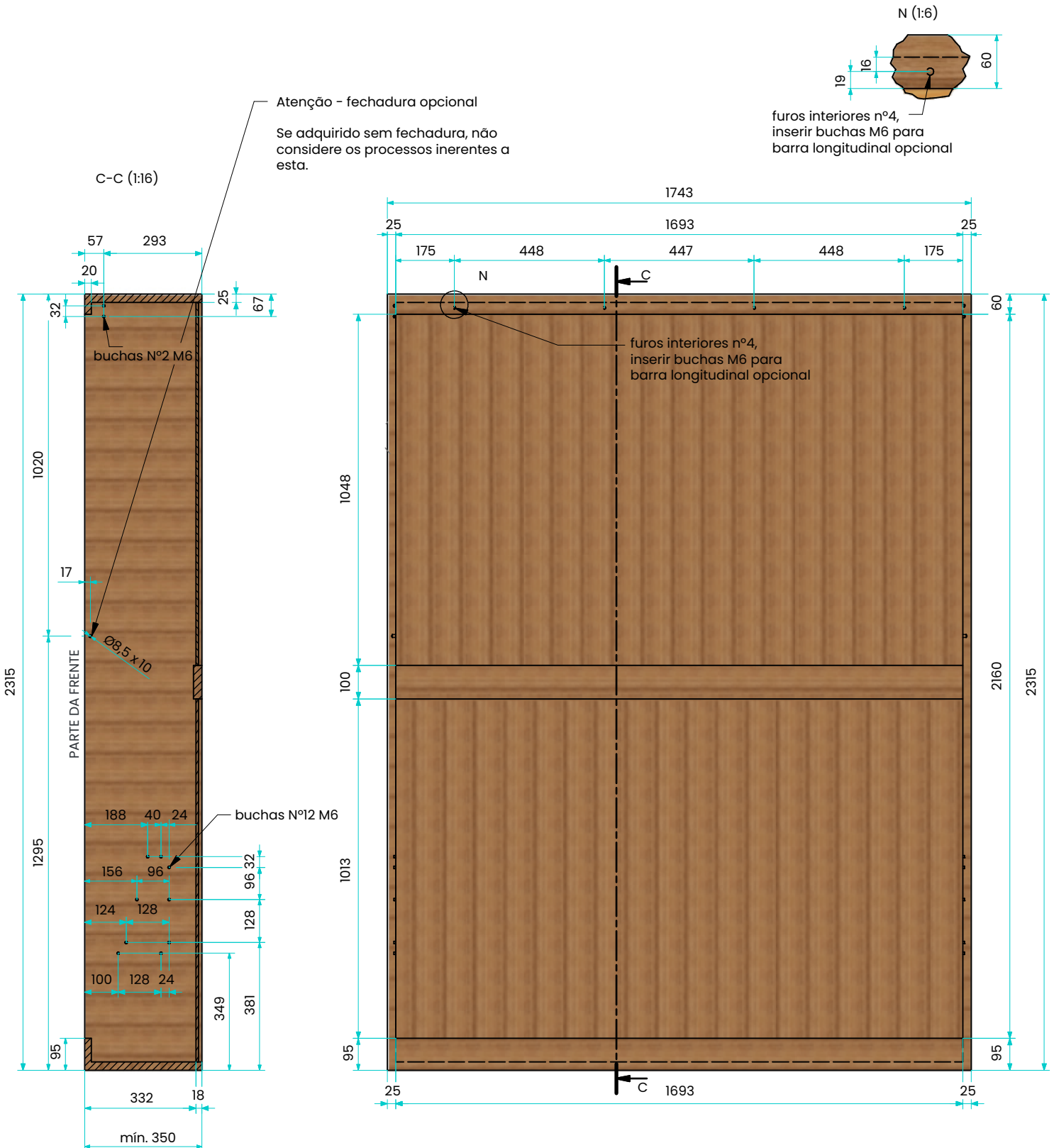


CAMA SWING 1600 X 2000

BED SWING 1600 X 2000



MÓVEL

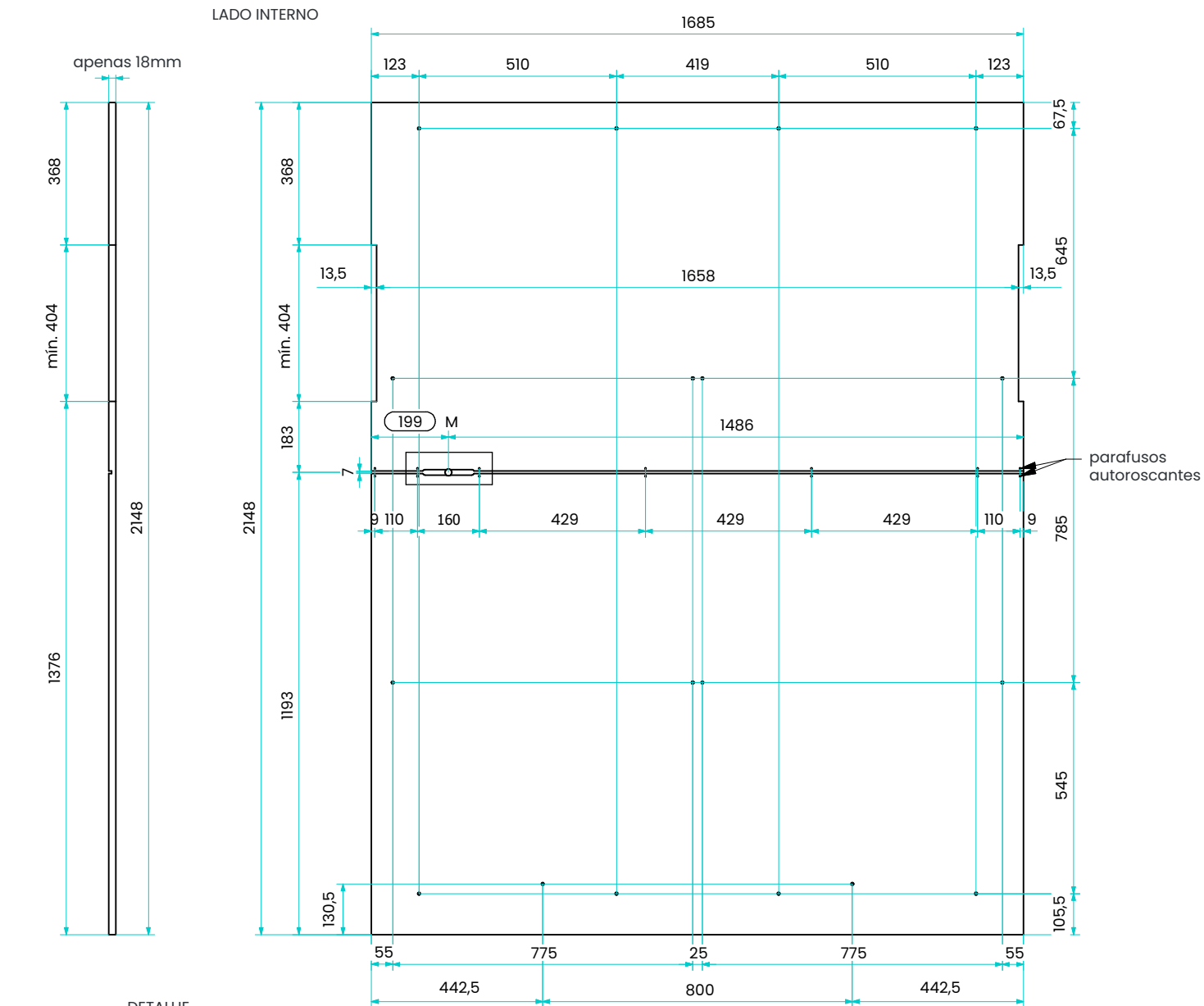


CAMA SWING 1600 X 2000

BED SWING 1600 X 2000



PONTOS DE FIXAÇÃO DO PAINEL FRONTAL PESO DO PAINEL 43,5kg +/- 4%



Verificar com a fechadura e haste

Inserir buchas M6 em cada furo

Atenção - fechadura opcional

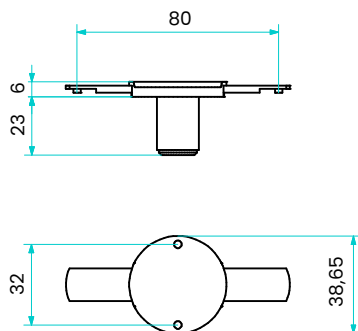
Se adquirido sem fechadura, não considere os processos inerentes a esta.

CAMA SWING 1600 X 2000

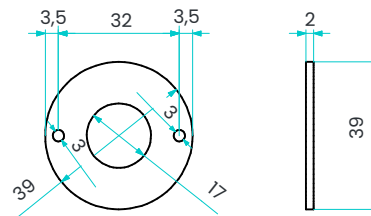
BED SWING 1600 X 2000



FECHO (1ADSR040)



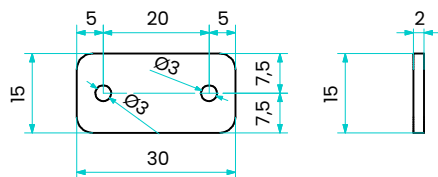
ESPAÇADOR DA FECHADURA (2ADSP039017002)



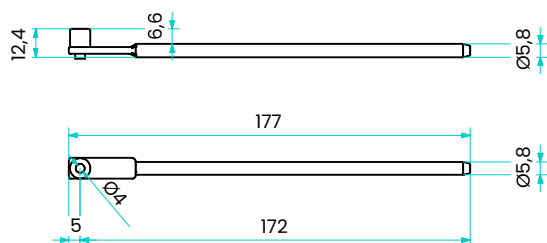
Atenção - fechadura opcional

Se adquirido sem fechadura, não considere os processos inerentes a esta.

Nº 7 PLACA DE FIXAÇÃO (2ADSP030015002)



HASTE CURTA (2ADSR042)



HASTE LONGA (2ADSR041)

